



An Independent Public School

# Morawa District High School NEWSLETTER

Issue 1, March 2017

## EVENTS COMING UP

.....

6 March  
Labour Day Holiday

.....

10 March  
Interhouse Swimming  
Carnival

.....

15 March  
Start of Spelling Bee

.....

24 March

Interschool Swimming  
Carnival at Carnamah

.....

3 April  
Whole school assembly

Like us on Facebook  
Morawa District High School



Tonia Carslake

## From the Principal

Welcome to the 2017 academic year at Morawa DHS. I hope you have all had a relaxing break with your children and families. A special welcome to new families and students to the school. I am pleased to report a smooth start to the 2017 school year. All students and staff have settled well into their classes. Since the success of teaching is based on the quality of teacher/ student relationships, this is an important time.

The following priorities have been set for 2017:

- Improving literacy and numeracy standards
- Improving health and wellbeing outcomes
- Student Attendance
- Information Communication and Technology

These are consistent with our strategic plan and our ongoing commitment to the DoE Strategic Plan for Public Schools –2016-2019, High Performance High Care.

PRIORITY 1: Success for all students

PRIORITY 2: High quality teaching

PRIORITY 3: Effective Leadership

PRIORITY 4: Strong Governance and Support

### Pupil Free Days

30 & 31 January 2017

24 April 2017 [Day before ANZAC Day Public Holiday]

17 July 2017

9 October 2017

15 December 2017

This year we welcome a number of new staff:

Mr Joel Hodgson – Year 5/6

Ms Nadia Katona - Kindergarten

Mrs Kirsten Haeusler - Music, back from maternity leave.

Mr Paul Smith – Design and Technology

Ms Margaret Henderson - English

Ms Jane Pearson – Health and PE Education Assistants

Mrs Becky Cunningham – Special Needs

Mrs Kate Hargreaves - Special Needs

Mrs Paula Willacy - Special Needs



Head Students - Kyrilee Whitmore & Corrine Moore with Mrs Tonia Carslake

We do hope they all enjoy their time in Morawa. In 2017 we welcome 13 Kindergarten students and 10 Year 7 students. In addition there are many other students who have enrolled at Morawa DHS for the first time. We will endeavour to do our best to ensure that every child's experience is a positive one and that goals and dreams are realised. In saying this, we rely on all parties to “do their bit.” Teachers will only be successful with the cooperation of students and with the support of parents. At the end of December, schools along with Year 12 students, wait with eager anticipation for the release of the Year 12 results. I would like to take this opportunity to congratulate the 2016 Year 12 students and in particular Aaron Connolly for winning an Exhibition VET Award of Excellence. Congratulations Aaron. Congratulations again to our newly elected student Council and House Captains for 2017. The Student Council will be led by our Head Girls Corrine Moore and Kyralee Whitmore. I look forward to working with Corrine and Kyralee as they lead the student body. Please refer to the middle of the newsletter for more information.

PARENT INFORMATION SESSIONS

Thankyou to all parents who attended the information sessions. If you were unable to attend please refer to our website for class information or alternativly contact the school office to make an appointment to meet a specific staff member.

PARENTS AND CITIZENS ASSOCIATION

Thank you to all who attended the P & C AGM meeting last week and to those who nominated for executive P & C positions for 2017. I'm pleased to announce the following fabulous executive team:  
Jamie Appleton - President  
Nicola Appleton – Secretary  
Jane Coaker – Treasurer  
Mark Coaker – Cropping coordinator  
Haylie Collins – Sports coordinator together with Brad Collins and Ben Turtley-Chapel  
Teneke Knight - Uniform  
Linda Collins – PP Committee President – Narelle Knox-Atkinson P & C Rep  
Nicola Appleton – Band President  
Michelle Morris - Canteen  
I look forward to working with you all. Thank you to Cameron Tubby for chairing the P & C AGM and for his dedication and commitment to the P & C over many years, he will be missed.

INTERHOUSE/INTERSCHOOL SWIMMING CARNIVALS

The Interhouse Swimming Carnival has been scheduled for Week 6, Friday 10 March at the Morawa Town Pool.

I look forward to your support of this event. Please contact Hayley Cosgrove if you are able to assist with the set up on 9 March or on the day at the carnival. The Interschool Swimming Carnival will be held at Carnamah on Friday 24 March.

INTERM SWIMMING WEEKS 2/3

The 2017 In-term Swimming program was held Weeks 2 & 3 for students from PP-Year 7. A huge thank you to Billie and Jo Foulkes for providing this essential educational life skill in such a fabulous program. Thank you also to the Shire of Morawa and in particular Sandy Reardon, for providing the fabulous swimming pool and facilities for our students to use.

SPELLING BEE

The spelling bee starts in Week 7. This is a good opportunity to sit down with your children and practice their words. The Spelling Bee final will be held on Wednesday 22 March and all are welcome to attend.

SCHOOL BALL

The Annual MDHS and WACOAM School Ball will be held early in Term 2 on the 6 May. More information will be distributed closer to the date.

I look forward to another productive and rewarding term with our students.  
Kind regards  
Mrs Tonia Carslake

Thefollowingpageshaveremindersofschoolprocedures.  
Please take the time to read through some of the expectations with your children. Class teachers will also cover expectations for students and help them to understand the rules and show respect to others at all times and behave in a safe and responsible manner. Youngerchildrenaregivenmanyreminderstohelpthem understand the expected behaviours and routines.

MORAWA DISTRICT HIGH SCHOOL BEHAVIOUR EXPECTATIONS  
RESPECT, RESPONSIBILITY AND ACHIEVEMENT  
Through a framework of Positive Behaviour Support, PBS, our school community will collaboratively enhance and sustain a safe, caring learning environment that fosters students’ academic achievement. Clearly defined expectations and the use of a common language will encourage our students to have a sense of belonging to ‘Endeavour and Achieve”. Our PBS mascot is a Bee. We look forward to our mascot arriving in the near future.  
PBS INSTRUCTIONAL REPSONSES TO UNPRODUCTIVE BEHAVIOUR  
PROMPT: Low key Response

REDIRECT: Brief, clear, private verbal reminder of the expected behaviour.  
RETEACH: Builds on the re-direct by specifically instructing the student on exactly what should be done.  
PROVIDE CHOICE: Can be used when a re-direct or re-teaching has not worked.  
STUDENT CONFERENCE: Staff member discusses the behaviour of concern, teaches the desired behaviour, provides reasons why it is important, and a plan is made for future use.

School Code of Behaviour

All students and staff are guided by our school Charter which states:  
• All students have the right to learn and all teachers have the right to teach free from disruption.  
• All students and staff have the right to be treated courteously and with respect.  
• All students and staff have the right to work in a clean and safe environment.  
• All students and staff have the right to have their property cared for and respected.  
• All students and staff have the right to expect all members of the school community to abide by the Department of Education regulations.  
In Classrooms  
Responsible and respectful behaviour is expected. Language used at school must be socially acceptable. Follow the instructions of all staff. Students are permitted in rooms only when a staff member is present. Students are expected to follow the class Code of Conduct.  
After entering the classroom in the morning, students must not leave without permission from their teacher. Students are expected to meet the school dress code and wear broad brimmed hat where available. Sun Smart and Dress policies are available online at our website <http://morawadistricthighschool.com>  
• Play in designated areas.  
• Use all playground and sporting equipment appropriately.  
• Play non-contact games (no tackling etc. in football, this is explained to children) for safety reasons.  
• Walk on verandas, undercover areas and other paved or concrete surfaces.  
• Students riding bikes, scooters etc. to school must wear helmets. It is recommended that all students under ten do not ride bicycles unsupervised. Please ensure bicycles and scooters are walked around the school grounds. A bike shed is provided for bikes and a scooter rack for scooters—no responsibility will be taken for bicycles or scooters left behind after school. Locking chains are recommended.

- Treat all school property with care.
  - Any items of personal property brought to school are at students’ own risk. Items taken from student bags are not covered by insurance. Valuables should be left at home.
- FOOD AND CANTEEN
- At the canteen orderly queuing is required.
  - Lunches are to be ordered between 8:30 and 8:40am.
  - Eat only in designated area.
  - Remain seated until dismissed.
  - Place rubbish in bins after being dismissed.

BEHAVIOUR MANAGEMENT IN SCHOOLS  
A Behaviour Management Policy operates in this school and is available on our website. Our aim is to have a positive approach to behaviour management through PBS, Positive Behaviour Support, by encouraging and praising good behaviour and work. The basis of the policy is that all students will be encouraged to take responsibility for their own behaviour. Parents will be advised if there are serious breaches of the School Code of Behaviour.

ANTI- BULLYING  
Morawa District High School seeks to affirm each child’s worth and dignity. Bullying strikes at the core of those values and prevents students developing their full potential. Bullying can take a number of forms – physical, verbal, social and psychological. The school strongly opposes bullying in all its forms. Please inform teachers and/or administration if your child is experiencing bullying so measures can be put in place to stop or prevent it from occurring. Students will be taught explicit social skills to do with resiliency and anti-bullying during health and pastoral care lessons.

ATTENDANCE, ARRIVALS AND DEPARTURES  
We hope to see continued positive attendance in 2017. Students who are regular attenders with over 90% will be placed in a raffle draw each term to win vouchers and receive passport points. Going to school every day does really matter. Teachers plan programs in a sequence so children can build on skills and activities from one day to the next. Attendance is compulsory for all students from Pre-primary to Year 12. It is a legal requirement that all absences are explained. Once absentees have been completed by class teachers, parents will receive an SMS message from the school informing them that a child is absent without reason. If your child is absent, please inform the school office of the reason in person, by telephone, in writing or by text. If your child is late, please ask your child to get a late note from the school office. Students are expected to arrive at school between 8:30 and 8:40am. If students arrive before 8:30am they must

immediately sit on the benches in the administration quadrangle and wait quietly until dismissed at 8:30am. Students are not to take their bags to class or order their lunch during this time. Students who arrive late (after 8.40am) must go to the office for a ‘late note’ before going to class. All lateness of any time is recorded in the record keeping and continued lateness will be discussed with parents. Students may only leave the school grounds during the day if they have been collected by a parent/guardian who has signed them out at the school office prior to collecting them from class. Teachers will not let children go without a sign out slip from the office. Teachers open classrooms at 8:30am to enable students to prepare for the day. School finishes at 3.10pm except Wednesday (2:30pm).

**PARKING**

Parents are asked to exercise particular care when leaving or collecting students. Parking is provided for parents on surrounding street frontages. Parents are also able to park behind the fence at the back of the school, accessed by Prater Street. Parents are discouraged from parking outside the Performing Arts building, particularly if leaving when students are walking to get on buses – this is a potential hazard due to reversing cars. All cars using this area must reverse park.

**UNIFORMS**

Uniforms are available from the Uniform Shop. Please phone the school office for more information. Please provide a hat for your child. Pre-primary is the first year of compulsory uniform.

**LOST PROPERTY**

Please write your child’s name clearly on all clothing and belongings so that they may be returned as quickly as possible. The “Lost Property” bin is located inside the unifrom shop. Uniform items not claimed after a reasonable time will be washed and sold through the Uniform Shop or forwarded to charity.

**HEAD LICE**

Head lice are a frequently occurring problem in schools. It is recommended that parents check their children’s hair every Friday evening so that any problems can be treated over the weekend. Health Department fact sheets are available from the school office to assist with treatment.

**HEALTH CARE**

The spread of infections of viral infections such as a cold or flu can be minimised if students stay home in the early stages of illness when they are most likely to spread the virus through coughing and sneezing.

Health care forms are available on our website if changes need to be made or contact the school office for a new form. Medication: Most prescribed medication can be administered at home. There are times however when medication needs to be administered at school. Before doing so, parents must complete a Health Care Form.

**HOMEWORK**

Homework may be set for students and can take the form of home reading, concepts to learn, practice examples, or assignments requiring the student to undertake some research. Please refer to our Homework policy on our website.

**LIBRARY**

Students are able to borrow books from the library once per week. Students will need a preferably waterproof book bag to borrow books. Lost or damaged books will incur a cost.

**MOBILES PHONES AND ELECTRONIC DEVICES**

Students are not to have mobile phones, iPods or iPads with them during the school day and they are discouraged from bringing them to school at all. If it is necessary for your child to bring electronics to school, they are to be switched off and taken to the school office before 8-40am where they are labelled and stored, or stored in their schoolbag at their own risk. Students may collect items after the final siren. Students in possession of, or using these items during school hours, will have them confiscated. The item will need to be collected by the student’s parent/guardian from the office at the end of the school day. If this is a reoccurring issue, parents will be contacted.

**PARENT VOLUNTEERS**

Each year the school program is greatly enriched by many volunteers, parents and family members helping out with reading groups, excursions, library work or other school functions. At the beginning of each year it is a mandatory requirement for the safety of children that all parents of children at Morawa DHS sign a confidential declaration and all non-parent volunteers require a Working with Children Check. Teachers will seek your cooperation in meeting our requirements to ensure children’s safety. Visitors to the School: For security reasons, all visitors to the school must sign the Visitors Register and obtain a badge at the school office. On completion of your visit please return the badge and sign out. This is due to emergency evacuation procedures. All Departmental employees, volunteers, visitors and external providers in child related work must hold a Working with Children Check in accordance with Departmental regulations.

Parents volunteering for school activities where they have a child enrolled at the school are exempt from having a Working with Children Check.

**GROUPS AND SECURITY**

Parents are asked to remind students that the school grounds are out of bounds out of school hours. In the event of vandalism, please report to School Watch on 1800 177 777 or the local Police on 99 601 666.

**WEBSITE**

The Morawa District High School website has an events and calendar page, and on parent information pages have policies, book lists and calendars that can be downloaded. <http://morawadistricthighschool.com/>.

**FACEBOOK**

We aim to do printed newsletters in 2017 twice a term. Small items of news and updates for parents will be available on the school Facebook page at “Morawa District High School”. Please join the site if you have not already.

**ON-ENTRY**

Students from Pre Primary to Year 2 have undergone On-entry testing over the last 2 weeks with very pleasing results.

**VET PROGRAM**

We have again partnered with Central Regional TAFE to deliver Cert II in Hospitality and the Cert II ICT. A number year 11/12 students are also attending their campus in Geraldton to complete Certificate courses 1 or 2 days per week. We look forward to continuing these partnerships and forming similar ones for the benefit of our students.

**WACE / ATAR PROGRAM**

Students in Year 11/12 can study WACE subjects face to face this year in English and Math’s including General and ATAR Classes. We have a large combined ATAR class for Math’s and English, consisting of WACOAM and MDHS Students hosted at MDHS and the WACOAM. Year 11/12 students can also study Visual Arts at an ATAR level and Design in Wood and Metal or Physical Education Studies.

**OLNA**

Students in years 10 and some Year 11s will start OLNATesting next week. This is the Online National testing of Literacy and Numeracy where students are given the opportunity to repeat the tests until reaching the minimum standard of competency in reading, writing and numeracy. Test results in the past have proved invaluable in allocating classes and developing appropriate courses for students in the following years.

Passing of the OLNATesting is a requirement for WACE Graduation from 2016. Students who do not achieve the minimum standard during Year 10, 11 or 12 can still complete year 12 without achieving WACE Graduation. All students who have passed OLNATesting must enrol in General or ATAR Courses in Year 11. New course structure for year 11 and 12 provides for 4 streams, Preliminary, Foundation, General and ATAR.

**SCHOOL CHAPLAIN**

We have been very fortunate to secure funding for the School Chaplain. We are currently working with Youth Care and planning for this program to begin in Semester 2. This program will provide valuable support for our students. Watch this space.

**STUDENT LEADERSHIP TRAINING 2017**

This year, our Student Councillors and House Captains are fortunate to have the opportunity to develop their leadership and problem-solving skills at the Student Grip Leadership Conference on the 4 April. Students will travel to Geraldton by bus and attend the GRIP Leadership Conference. This conference is specifically designed to equip students with the skills and knowledge they will require to be successful school leaders. Students will be accompanied by Mrs Solomon.

MORAWA DISTRICT HIGH SCHOOL -2017 TERM DATES	
Semester 1	
Term 1	Wednesday 1 February - Friday 7 April
Break	Saturday 8 April - Sunday 23 April
Term 2	Wednesday 26 April - Friday 30 June
Break	Saturday 1 July - Sunday 16 July
Term 3	Tuesday 18 July - Friday 22 September
Break	Saturday 23 September - Sunday 8 October
Term 4	Tuesday 10 October - Thursday 14 December



Chloe Knox-Atkinson

Medical Updates

All medical files are currently being updated and it is essential that we are notified of any changes to your child’s medical status. If you child is asthmatic, has allergies, is anaphylactic or has any other medical condition where there have been some changes since last year, please notify the school immediately so that our records are correct and your child will receive the correct treatment if the need arises.

Thank you to those parents who have already notified the school of any changes. A reminder to parents to ensure all medications are current and haven’t expired. For those who are asthmatic, it is highly recommended that a spacer be used with the ventolin puffer, as it ensures the medication is fully inhaled for maximum benefit. *If parents would like a copy of their child’s medical plan, please contact the school to have it emailed or sent to you.*

CONJUNTIVITIS

Conjunctivitis is Conjunctivitis is a swelling, irritation or infection of the membrane that lines the eyelids and the white part of the eye. This membrane is called the conjunctiva. The symptoms of conjunctivitis

Symptoms of conjunctivitis include:

- Redness in one or both eyes
- Itchiness in one or both eyes
- A gritty, uncomfortable feeling in one or both eyes
- A discharge in one or both eyes that can form a crust during the night and can sometimes make it difficult to open the eyes in the morning
  - Excessive tears
  - Swelling of the eyelids
- Sensitivity to light, especially bright sunlight

As an infectious condition, it is best to avoid contact with other people, if possible. If someone you know is suffering from conjunctivitis, avoid contact with them. Children with conjunctivitis should not attend school until they are fully recovered.

Good hygiene is extremely important, as it will help to prevent the spread of conjunctivitis. Some suggestions include:

- Change pillowcases frequently
- Keep your hands away from your eyes
  - Wash hands frequently
- Handle and clean contact lenses properly
- Don’t share towels, tissues or handkerchiefs
  - Don’t share eye cosmetics

STUDENT COUNCIL 2017 - PRIMARY		STUDENT COUNCIL 2017 - SECONDARY	
Year 4	Carly Ballantyne	Year 7	Megan Letton Aaron Grist
	Jamie Cosgrove	Year 8	Emily Beauchamp
Year 5	Michael Cowley	Year 9	Hayley Clayton
	Sophie Scott	Year 10	Kayla Campbell
Year 6	Mac Ballantyne	Year 11	Mackenzie Matthews
	Jacob Coaker		Jerri-Lee Clayton
	Denayh Coyne	Year 12	Molly Traylen-Witt
	Isabella Tomlinson		Alexandra Whitehurst
		HEAD STUDENTS	
		Corrine Moore	
		Kyralee Whitmore	
HOUSE CAPTAINS 2017 - PRIMARY		HOUSE CAPTAINS 2017 - SECONDARY	
Emerald	Denayh Coyne	Emerald	Danielle Letton
	Shaun Turner		Darcie Parker
Ruby	Mac Ballantyne	Ruby	Hayley Clayton
	Isabella Tomlinson		
Sapphire	Corin Campbell	Sapphire	Claire Tynan
	Darcy Tynan		Samantha Councillor
		District Diamonds	Jerri-Lee Clayton

HEAD STUDENTS  
Corrine Moore & Kyarlee Whitmore



2017 Primary Student Leaders  
Shaun Turner, Mac Ballantyne, Corine Campbell, Bella Tomlinson, Denayh Coyne & Darcy Tynan

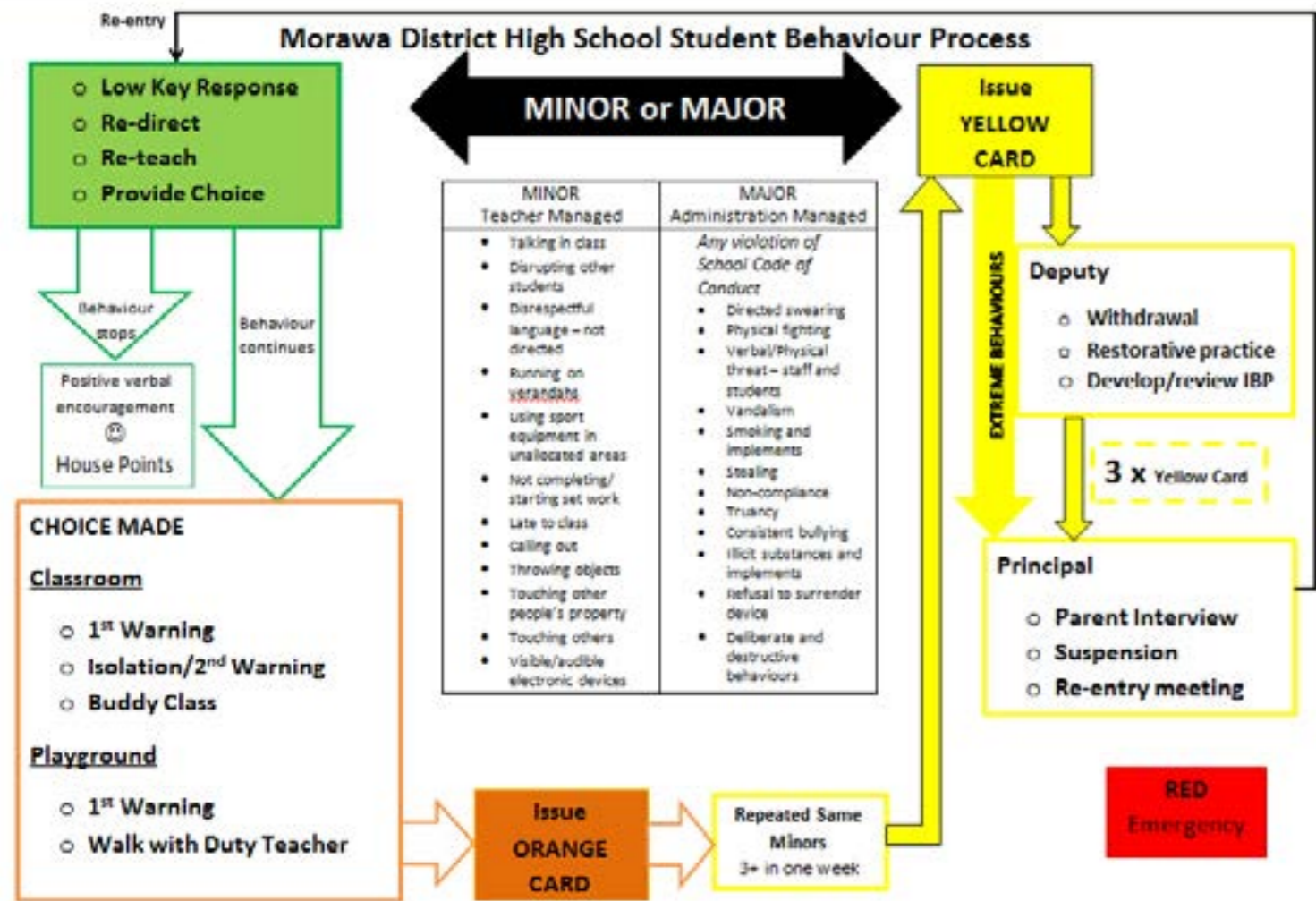


2017 Secondary Student Leaders

Left to right -Aaron Grist, Teagan Parker, Danielle Letton, Emily Beauchamp, Megan Letton, Samantha Councillor, Jerri-Lee Clayton, Hayley Clayton, Kayla Campbell, Taylor King, Molly Traylen-Witt, Corrine Moore, Kyralee Whitmore, Alexandra Whitehurst, Mackenzie Matthews and Claire Tynan



# Morawa District High School Student Behaviour Process



## PRIMARY STEM

A higher emphasis has been placed on STEM (science, technology, engineering, mathematics) at Morawa District High School in our quest to promote the development of the 21<sup>st</sup> century skills of problem solving, critical analysis and creative thinking. On Thursday 2 March students in Years 2-6 were involved in project based problem solving activities arranged by our STEM coordinator Mrs Solomon. Students were divided into their faction houses and worked collaboratively in small teams. Thank you to classroom teachers, House Captains and Mrs Solomon for an exciting morning exploring tin foil boats, electronic kits and building basketball towers. We look forward to having another session at the end of term in Week 9.

Matthew Olsen, Carly Ballantyne & Angus Hutchison



Sam Knox-Atkinson & Sophie Scott

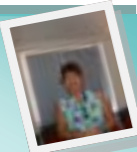


Marget Barnes & Sophie Collins

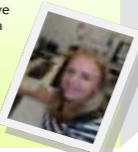


## 2017 New Staff/ Returning Staff

**Mrs Paula Willacy—Special Needs EA Kindy**  
**Where did you come from?** Originally Armidale in NSW.  
**What do you like to do in your spare time?** Water skiing, swimming and the beach.  
**Something people do not know about you?** Where do I start I was in the Navy!  
**What's your favourite dinner?** Seafood.  
**What do you think of Morawa so far?** It reminds me of my home town.



**Miss Nadia Katona—Kindergarten**  
**Where did you come from?** Morawa! I have lived here all my life.  
**What do you like to do in your spare time?** I love to spend time with my two beautiful kiddies. I also enjoy quick trips to Dongara to the beach, Geraldton to go shopping and spending too much time on Pinterest.  
**Something people do not know about you?** I have travelled from one side of WA to the other to watch my parents and brother race speedway.  
**What's your favourite dinner?** Fresh Dhu Fish & 'grandad's rice'.  
**What do you think of Morawa so far?** I had a taste of the city life when I attended University for four years—Morawa is where I'd rather be!



**Miss Jane Pearson—Physical Education**  
**Where did you come from?** I grew up in Collie.  
**What do you like to do in your spare time?** I like to play basketball and listen to music.  
**Something people do not know about you?** I have been to the most remote Aboriginal community in Australia, which is also the second most remote community in the world.  
**What's your favourite dinner?** Some form of Asian cuisine.  
**What do you think of Morawa so far?** Very lovely community. I have enjoyed my time here so far.



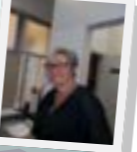
**Mrs Kate Hargreaves—Special Needs EA Primary**  
**Where did you come from?** Originally from Adelaide.  
**What do you like to do in your spare time?** Knit and Crochet.  
**Something people do not know about you?** Lots of stuff because I am new!  
**What's your favourite dinner?** Garlic Prawns  
**What do you think of Morawa so far?** It's a really good town.



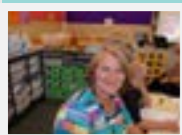
**Mr Joel Hodgson—Yr 5/6**  
**Where did you come from?** I grew up in Gnarabup, Margaret River, but have come from Perth after 5 years of Studying hard!  
**What do you like to do in your spare time?** In my spare time, I like to ride bikes, surf, play footy, guitar, basketball... Most things really, because spare time is so precious for us teachers!  
**Something people do not know about you?** I can recite pi to 100 decimal places.  
**What's your favourite dinner?** Roast dinners with truck loads of gravy.  
**What do you think of Morawa so far?** Three words: social, sporty and superb.



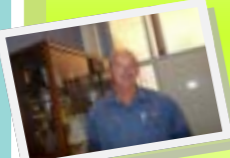
**Ms Margaret Henderson—English Teacher**  
**Where did you come from?** Grew up in Melbourne, VIC  
**What do you like to do in your spare time?** Make jewellery and read lots.  
**Something people do not know about you?** If Miss Pearson is talking about Kalumburu, so have I. I also ride a motor bike—BMW GS650 which I rode to Victoria for 3 weeks after getting my licence.  
**What's your favourite food?** Beetroot.  
**What do you think of Morawa so far?** I really love it here!



**Mrs Rebecca Cunningham—Special Needs EA Primary**  
**Where did you come from?** North Dakota USA  
**What do you like to do in your spare time?** Ride my horse.  
**Something people do not know about you?** Not much!  
**What's your favourite dinner?** Anything Lamb!  
**What do you think of Morawa so far?** I have lived here for 20 years now and it's still great. Great people.



**Mr Paul Smith—Design and Technology**  
**Where did you come from?** Meekatharra.  
**What do you like to do in your spare time?** What spare time?  
**Something people do not know about you?** I like cooking.  
**What's your favourite dinner?** Blue steak.  
**What do you think of Morawa so far?** I like it but it's not hot enough!



**Mrs Kirsten Haeusler—Music Teacher**  
**Where did you come from?** Morawa  
**What do you like to do in your spare time?** I like to spend time with my two children on our farm, go bush walking, the beach in Dongara and practicing my tuba, piano and guitar.  
**Something people do not know about you?** I spent two years studying in Canberra at the Australian National University.  
**What's your favourite dinner?** Lamb chop casserole.  
**What do you think of Morawa so far?** I love it—it's my home town!



## SWIMMING LESSONS 2017

Swimming lessons are over for another year!

Our Pre-primary to Year 7 students have been doing swimming lessons for the last two weeks and having a great time whilst learning an important skill.

Congratulations to all the students who participated.



# 2017 CONTRIBUTIONS AND CHARGES

The school relies on and appreciates the contributions and charges paid by parents to assist in supplying your children with the best possible materials and resources. Student statements for Kindergarten to Year 8 will be mailed out to parent/guardians this week.

Statements for students in year 9-12 will follow once students have settled into their elective subjects.

I appreciate the statements can be difficult to read so I have included an explanation which I hope will assist.

## HOW TO READ YOUR STATEMENT

### OPENING BALANCE

An amount showing here indicates either;

- An outstanding amount from a previous year. This figure will be represented as a **\$0.00** amount and correspond to the amount showing in the Summary of Outstanding Amounts table at the bottom of the statement

OR

- As a credit carried over from previous years. This figure will be represented as a - **\$0.00** amount. This may be from incursion /excursion funds that were not fully expended.

### VOLUNTARY CONTRIBUTIONS

This is the amount the school, in accordance DOE policy, and with approval from the School Board and Finance Committee, asks from parents/guardians to assist with the cost of providing materials, services and facilities used by the students. These include;

- Printed and electronic materials.
- Photocopying.
- Art and craft materials.
- Design & Technology materials.
- Cooking consumables.
- Transport to and from sporting events and excursions.
- Entry to and use of premises such as the swimming pool, town oval and sporting complex.

Morawa DHS asks \$60.00 for students in K- Year 6 for the school year.

Morawa DHS asks \$235.00 for students in Year 7-10 for the school year.

### CHARGES

Charges are costs that are expected to be met by parent/guardians and include:

### CHARGES EXTRA COST OTIONAL COMPONENTS

These apply to Year 9 & 10 elective units such as Wood and Metal work, Ceramics and Jewellery which carry a high cost of materials, services and facility costs.

### YEAR 11 & 12 COURSES

The School Education Act 1999 states that **charges** apply to all Year 11& 12 courses. Morawa DHS makes every endeavour to keep course costs to a minimum to ensure maximum participation.

### SCHOOL OF ISOLATED & DISTANCE EDUCATION (SIDE)

Morawa DHS offers students the option to study courses that the school is unable to offer. The school is billed directly by SIDE for these courses. Parents are required to pay when enrolling students. The school charges a SIDE amenity fee of \$10.00 per subject to cover the cost to provide stationery, photocopying and equipment.

### VOLUNTARY APPROVED REQUESTS

This amount includes

- P&C fees (payable per family)
- Library Contributions

### OTHER OPTIONAL COSTS

These costs may include;

- Camps
- Incursions/Excursions
- Year book
- Graduation jackets

### OTHER ITEMS

These could include payments collected on behalf of other entities including;

P&C Uniform payments

Scholastic Book Club.

Band fees

### PAYMENT OF ACCOUNTS

Morawa DHS is offering parents and carers a 10%early discount on payments made in full by Friday 3 March (week 5). Please note the discount only applies to school fees not money collected for P&C membership, Library contributions or school camps etc.

Fees may be paid by the following methods:

- cheque or cash
- credit card with MasterCard or Visa
- direct deposit to the Morawa District High School Headmasters Trust Account

Bankwest

BSB: 306-024

Account Number: 4176384

### Cheques should be made payable to Morawa District High School

If you would like to discuss a payment plan please call in to the school or phone the front office on 99 710 900.



# parenting\*ideas insights



## How to get kids off to school on time without yelling, whining or constantly reminding!

By Michael Grose

*If you struggle with peace, harmony and getting kids focused on school these 6 suggestions will help your mornings run a littler smoother.*

Getting kids to school on time can be infuriating and anxiety-inducing for parents, especially if you work! The clock just keeps ticking and doesn't make allowances for morning meanderers.

It's easy if your child is the bright-eyed, bushy-tailed type who wakes up ready and focused for school. But what if you have a child who

needs time to wake up, and is easily distracted by the television, a pesky sibling or even the family pooch that wants to be patted? What if you have a child who drags the chain and wouldn't get to school without at least five parental reminders to hurry up? In these cases mornings can be chaotic and very stressful.

**If you struggle with peace, harmony and getting kids focused on school these suggestions will help you make mornings run a littler smoother.**



POSITIVE PARENTING



### 1. Prepare as much as you can the night before

It may be stating the obvious but the less that children have to do in the morning the better. So putting clothes out, preparing lunches and snacks and having school bags packed and ready the night before will mean there is less decision-making and less for everyone to worry about in the morning.

### 2. Identify and overcome distractions

As mentioned above, children can easily be distracted before school. If possible remove distractors such as televisions and digital devices. Allow them when everyone is ready for school. Minimise the impact of other distractions such as managing argumentative siblings. Stay out of these arguments as your attention usually just inflames sibling disputes. Be liberal with encouragement, affection and once-only reminders in the morning and minimise conflict resolution, arguments and angry words.

### 3. Make your morning routine visual

If, for whatever reason, your child randomly and dreamily wanders from one activity to another then consider placing a sequenced photo chart of

## parenting\*ideas

### How to get kids off to school on time without yelling, whining or constantly reminding!

4 or 5 main activities (e.g. wake up, breakfast, get dressed, chores, pack bags) in a prominent place that he or she can refer to each morning. This visual prompt will help put some routine into your child's morning, as well as reduce their dependence on you.

### 4. Delegate some responsibility

Consider delegating the job of keeping a wayward child on track to a capable, bright-eyed, bushy-tailed sibling. Let me explain. If you come from a family of four or more children then there is a reasonable chance that either you or a sibling took charge of many aspects of the family routine, including getting kids up each morning and off to school. This is not so much a case of parents neglecting their responsibilities but rather letting go of the minutiae of management. When this happens a capable and caring child will generally fill the parental void. Alternatively, a parent may purposefully give that job to a child. Either way, delegation is a great way of instilling parenting skills into the next generation as well as keeping children from being dependent on their parents.

### 5. Make yourself scarce

If you find it impossible to ignore your child's morning meanderings or misbehaviours, or if you think that there is no way your child would get to school without your timely reminders then try keeping yourself busy.



© Parenting Ideas 2017

Get yourself ready for the day and give your children the space to work things out themselves. You may be surprised how capable your child is, when no one reminds him or her of their responsibilities. A word of warning: Your child may test out your resolve by doing very little to get him or herself ready. If so, be prepared to give the next idea a go.

### 6. Be willing to take your child to school even if they aren't fully ready

If keeping up appearances is important then you will struggle with this idea, but bear with me. Your job as a parent is to shift the responsibility of getting to school to the person who should bear it – that is, your child. When you worry more about something than a child then that task becomes your responsibility. Mornings will always be stressful if you take responsibility for kids being at school on time. One way around this is to be willing to take your child to school even if they are not fully ready. It may mean your child has to hurriedly put his or her shoes and socks on in the car, or perhaps finish that piece of toast on the way to school. Doing this may make you feel like a mean parent but if you do it in a reasonable, matter-of-fact way then you are guilty of nothing more than putting a little responsibility the way of your child. Children will usually learn more from your actions than your words.

POSITIVE PARENTING



It's times such as bedtime, mealtime and mornings when children transition from one activity to another that brings so much stress for parents. Often children just want to keep doing an activity they enjoy rather than go to bed, join you at the meal table or go to school as required. It's easy to be drawn into arguments and disputes with children who don't want to play the cooperation game. It helps at these times to stick to a known routine (that may be individual for each child); to talk a little less (cue them once but no more); and be willing to put a reasonable action or consequence in place so that children take some responsibility themselves.

**Visit our website for more ideas and information to help you raise confident and resilient young people.**





### Scholastic Book Club Orders

Please return all Book Club orders by the due date to class teachers or direct to the school office **with payment** in an envelope to be receipted. The order form is the back page of the brochure. Alternatively orders may be placed using the Book Club **LOOP** platform.

Payment options are -

1. Cash
2. EFTPOS at the front office
3. **Cheque made payable to Morawa District High School - NOT** Scholastic Australia as indicated on order form
4. Credit card as outlined at Option 1 on the order form. Order and pay online with **LOOP**

Once receipted, orders are passed on to the Book Club coordinator, Catherine Moore - MDHS Library Officer. Orders take two to three weeks from order date to arrive back at school.

If you do not wish your child/children to be given the order directly (surprise, gift), please attach a note requesting this, with contact details, so alternative collection arrangements can be made. **LOOP** orders intended as gifts can be tagged using the **Gift** Function.

There are two issues of Book Club per term.

All Book Club enquiries to Catherine Moore at MDHS Library on 99710900.



## Book Club LOOP

**LOOP** is the Scholastic Book Club Linked Online Ordering & Payment platform.

It's easy to order and pay online for your child's Book Club order using your credit card. If your school is not yet in the **LOOP**, speak with your school's Book Club Organiser.

Head to **scholastic.com.au/LOOP**

or



Follow these **easy** steps!

**1** Simply grab your child's Book Club catalogue and either **SIGN-IN** or **REGISTER** your account.

**2** Add your child's first name and last initial (so the school knows who the book is for), then select your **SCHOOL** and your **CHILD'S CLASS**.  
*Note: You can order for multiple children at once if they attend the same school.*

Looking for **MORE** product information? Additional content such as videos and downloads are available for select titles. Select your issue and enter the item number to view information on titles and some great resources, such as videos and reviews.



**3** Click on **ORDER** and enter the item number from the Book Club catalogue.

**4** All orders are linked directly to the school for submission to Scholastic. Books will still be delivered to your child's classroom if you order by the close date.

*That's it!* There's no need to return paper order forms or payment receipt details to your school.

SCHOLASTIC



## Spelling Bee

Starting in Week 7 & 8, with the Final being on Wednesday 22<sup>nd</sup> March.

Information about the event has been sent home to parents and all primary students have been given spelling lists to learn. It is hoped that students will study their words at home as well as at school.

This could be a fun time for the family to learn the words together.

Parents are invited to the Final so we look forward to seeing many of you there.



### GENERAL INFORMATION

The Western Australian Department of Education provides an allowance to assist eligible families with secondary schooling costs.

Parents/guardians must apply for the Secondary Assistance Scheme each school year (annually) – applications do not carry forward to future years.

To be eligible for the allowance the parent/guardian must hold a Department of Human Services (Centrelink) or Veterans' Affairs card that represents a statement of income for the family.

The allowance consists of two components:

- \$115 Clothing Allowance paid directly to the parent/guardian or the school.
- \$235 Educational Program Allowance paid directly to the school.

Application is made by the parent or guardian for student/s enrolled in Years 7–12 studying a full time secondary course at a Western Australian public school.

### ELIGIBILITY CRITERIA

Parent or Guardian must hold one of the following cards:

- Department of Human Services (Centrelink) Health Care Card
- Department of Human Services (Centrelink) Pensioner Concession Card
- Veterans' Affairs Pensioner Concession Card

Please Note: The only Veterans' Affairs Card that meets the criteria is a blue card that is issued annually and expires in December each year. This card is income means tested.

The parent/guardian must be the holder of a card that is valid some time during first term. The only exception to this is when a student holds their own health care card and has been declared independent by Centrelink (e.g. Living Away from Home). In this instance, a letter of confirmation from Centrelink needs to accompany the application.

The allowance is paid up to and including the year the student turns 18 years of age i.e. students born in 1998 or before are ineligible in 2017.

### APPLICATION FORMS

Application forms should not be altered and are to be completed at the school during Term 1 only. If the form is completed prior to the commencement of Term 1 the school must complete the enrolment confirmation section to confirm attendance. (Forms dated by the school prior to

### 2017 SECONDARY ASSISTANCE SCHEME PUBLIC SCHOOLS Applications close 7 April 2017

Term 1, 2017 will not be accepted). Please ensure to keep a photocopy of the signed form for school records.

### LATE APPLICATIONS

Late applications will only be accepted in extenuating circumstances and must be accompanied with a written explanation.

Eligible interstate or overseas students who are enrolled after first term may apply for the allowance. Date of enrolment must be noted on the application.

### CONTRIBUTIONS AND CHARGES

Schools will receive the Educational Program Allowance of \$235 for Secondary Assistance recipients. For students in Years 7 to 10 the Allowance will be paid directly to the school and in the first instance, will be applied towards the voluntary contribution. Any balance will be applied against charges or as negotiated with the parent/guardian. For students in Years 11 to 12 the Allowance will be applied to cover charges, in the first instance.

### CLOTHING ALLOWANCE

The clothing allowance of \$115 will be paid to the parent/guardian unless indicated on the application form that you wish it to be paid to the school. If payment to the parent/guardian is requested, the payment will be deposited into the parent/guardian bank account. It can between take between 8 to 12 weeks to receive this payment.

### PROCESSING OF PAYMENTS

Once the form is completed by the parent/guardian, the school will forward either the electronic file (via email) to the Schools Resourcing and Support Directorate for processing whilst retaining the **original form at the school** or if completing applications manually, forward the **original forms** retaining a photocopy for the school records.

If you change any of your details supplied on the application form, please notify us as soon as possible on 9264 4516.

We will endeavour to have all clothing payments made to the parent/guardian by 31 May 2017.

**FURTHER INFORMATION**  
Schools Resourcing and Support Directorate  
Department of Education  
151 Royal Street  
EAST PERTH WA 6004

Telephone: (08) 9264 4516  
E-mail: [student.allowances@education.wa.edu.au](mailto:student.allowances@education.wa.edu.au)



### 2017 ABSTUDY SUPPLEMENT ALLOWANCE Applications close 7 April 2017

### GENERAL INFORMATION

The Western Australian Department of Education provides an allowance to assist eligible families with secondary schooling costs. The ABSTUDY Supplement Allowance is available to valid Department of Human Services (Centrelink) or Veterans' Affairs card that represents a statement of income for the family.

Parents/guardians must apply for the Secondary Assistance Scheme each school year (annually) – applications do not carry forward to future years.

To be eligible for the supplement allowance, the parent/guardian must hold a Department of Human Services (Centrelink) or Veterans' Affairs card that represents a statement of income for the family.

Furthermore, the school or parent must have received the School Fee Allowance of \$78 or \$156 from the Department of Human Services (Centrelink) as part of the student's ABSTUDY School Fees Allowance payment.

The Department of Education ABSTUDY Supplement Allowance consists of \$79 paid directly to the school.

Please note that the Secondary Assistance Scheme cannot be claimed as well as this allowance.

Application is made by the parent or guardian for student(s) enrolled in Years 7–12, studying a full time secondary course at a Western Australian public or private school.

Applications submitted for students from interstate for the Abstudy Supplement Allowance must be made within one month of the student enrolling at the school.

### ELIGIBILITY CRITERIA

Parent or Guardian must hold one of the following cards:

- Department of Human Services (Centrelink) Health Care Card
- Department of Human Services (Centrelink) Pensioner Concession Card
- Veterans' Affairs Pensioner Concession Card

The only Veterans' Affairs Card that meets the criteria is a blue card that is issued annually and expires in December each year. This card is income means tested.

The parent/guardian must be the holder of a card that is valid some time during first term. The only exception to this is when a student holds a health care card in their name and is declared independent by the Department of

Human Services (Centrelink) (e.g. living away from home). In this instance, a letter of confirmation from Centrelink needs to accompany the application.

The allowance is paid up to and including the year the student turns 18 years of age, i.e. students born in 1998 or before are ineligible in 2017.

### APPLICATION FORMS

Application forms should not be altered and are to be completed at the school during Term 1 only. If the form is completed prior to the commencement of Term 1 the school must complete the enrolment confirmation section to confirm attendance. (Forms dated by the school prior to Term 1, 2017 will not be accepted). Please ensure to keep a photocopy of the signed form for school records.

Applications close Friday 7 April 2017.

### LATE APPLICATIONS

Late applications will only be accepted in extenuating circumstances and must be accompanied with a written explanation.

Eligible interstate or overseas students who are enrolled after first term may apply for the allowance. Date of enrolment must be noted on the application.

### PROCESSING OF PAYMENTS

Once the form is completed by the parent/guardian, the school will forward either the electronic file (via email) to the Schools Resourcing and Support Directorate for processing whilst retaining the **original form at the school** or if completing applications manually, forward the **original forms** retaining a photocopy for the school records.

Payment of the ABSTUDY Supplement Allowance is made directly to the school and should be deducted from your school account.

**POST TO**  
Schools Resourcing and Support Directorate  
Department of Education  
151 Royal Street  
EAST PERTH WA 6004

**FURTHER INFORMATION**  
Telephone: (08) 9264 4516  
E-mail: [student.allowances@education.wa.edu.au](mailto:student.allowances@education.wa.edu.au)

WEEK	MON	TUE	WED	THU	FRI	SAT/SUN
<b>5</b>	Feb 27	28	Mar 01	02	03 Clean up day at the school	04/05
<b>6</b>	06 Labour Day public holiday	07 IPA Board meeting	08 Primary Assembly	09	10 Inter house swimming carnival	11/12
<b>7</b>	13 Spelling Bee begins	14	15	16	17 National Day against Bullying	18/19
<b>8</b>	20	21 Harmony Day	22 Spelling Bee final	23	24 Inter school swimming carnival	25/26
<b>9</b>	27	28	29	30	31	01/02

Grounds and Security: Parents are asked to remind students that the school grounds are out of bounds out of school hours. In the event of vandalism, please report to School Watch on 1800 177 777 or the local Police on 99 601 666.

## MORAWA DISTRICT HIGH SCHOOL BUSINESS PLAN 2016-18

### Vision

Morawa District High School is held in high esteem and considered as the region's high school of choice, providing a strong and sustainable education for the students, families and communities in the district.

### Mission

Morawa District High School is an Independent Public School which shares a commitment with parents and the community to provide a safe, stimulating and differentiated learning environment, encouraging all students to be fully engaged and motivated to excel.

